



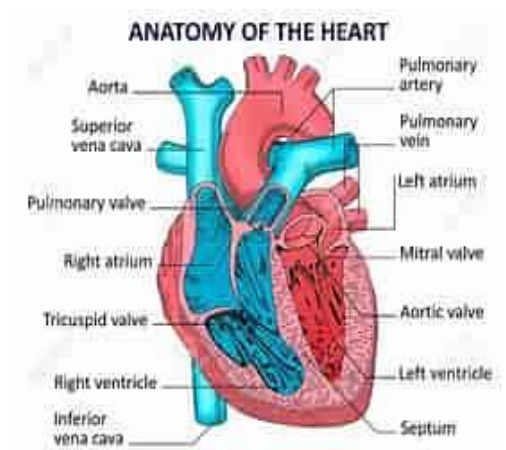
Year 6

Autumn – 2024



Skellig

The human circulatory system



Climate Change



## **Year 6**

I hope you all had a lovely summer and welcome to Year 6!

### **Glossary**

Below are the key words your child will be using in their classwork next half term.

**Please help your child to complete the glossary and be able to use and spell the words.**

**Feel free to add any additional topic related vocabulary that you think of.**

<b>Word</b>	<b>Definition</b>
<b>Heart</b>	
<b>Pulse</b>	
<b>Pumps</b>	
<b>Blood</b>	
<b>Blood Vessels</b>	
<b>Transported</b>	
<b>Oxygen</b>	
<b>Carbon Dioxide</b>	

### **Over the next half term, your child will be working on:**

- In science, we will be learning about the human circularity system as well as the effects of diet and exercise on the human body.
- We will be discussing the achievements of the ancient Egyptians and the ancient Islamic civilisation.
- We will be learning about climate change and how this affects the world around us.
- In maths we will be focusing on the place value, addition & subtraction, and multiplication and division.
- In English, we will be writing based on well-known fairy tales.
- In PE, we will be doing leadership in sport.
- In DT, children will be taking part in the classroom kitchen.

### **Your child needs your help and involvement!**

#### **Please get involved by:**

- Discussing the new vocabulary with your child.
- Regularly practicing all of the times tables up to 12.
- Encouraging your child to do some reading for at least 10 minutes every day, independently or to an adult.

### **Routines**

- We will be having PE every Thursday and Friday. **Please ensure your child comes to school with, and not in, their PE kits on these days.**
- Reading books should come into school every day and can be changed once the reading record has been signed by an adult.
- Spelling tests will take place every Friday.
- Children should only bring their bookbag into school.
- Homework books will be in the form of a learning log as previously used. The children will have a choice of subjects to choose from based on learning that week.

## **Homework**

<b>Spellings</b>	<b>Given out Friday</b>	<b>Tested on a Friday</b>
<b>Times Tables</b>	<b>Tested Weekly</b>	
<b>Learning Log</b>	<b>Given out Friday</b>	<b>Collected on Thursday</b>

## **Dates for the diary**

School Photo Day	19 <sup>th</sup> September
Football Club Begins (15:20 – 16:15pm)	22 <sup>nd</sup> September
Parent's Evening	5 <sup>th</sup> October
Harvest Assembly	18 <sup>th</sup> October
Half Term	21 <sup>st</sup> October
Back to school	28 <sup>th</sup> October
Pumpkin Party	30 <sup>th</sup> October
KS2 Cinema Trip	15 <sup>th</sup> October
Christmas Dinner/Christmas Jumper Day	10 <sup>th</sup> December
KS2 Christmas Party	18 <sup>th</sup> December
Pantomime	19 <sup>th</sup> December
Awards Assembly	20 <sup>th</sup> December
School Closes at 2PM	20 <sup>th</sup> December
School Reopens	6 <sup>th</sup> January

If you have any worries or concerns, please let me know.

Thank you.

Mr White 😊